

One Sewing Machine

Many ways to get creative.



USHA JANOME
Memory Craft

For more information, reach us at:

The hab by USHA, G-1, 444 Corporate Lounge, Opp. Sahib Khatwara Darbar, Road No. 7,
Khar - Bandra Linking Road (Near Citibank), Khar (W), Mumbai - 400 052.

 www.thehab-usha.com |  thehab@usha.com |  +91 - 77770 26367 |  @Thehab_Usha



USHA International is a leading consumer durables company and amongst India's most trusted brands. Founded in 1936 by Lala Shri Ram as a sewing machine company, it has grown and evolved and today offers a diversified portfolio of products including fans, kitchen and home appliances, heating and cooling water solutions, and lights. Built across nine decades, the legacy brand has kept pace with the new realities and offers products aligned to the modern consumer needs and is firmly entrenched in the Indian consumer ecosystem both in the online and offline space.

With its headquarters in Gurgaon, 16 location offices, 50+ company showrooms, 30+ warehouses, and 320+ service centres and an in-house customer call centre ensuring its customers get a quick resolution to any issues they may face, Usha embodies the spirit of customer-centricity. Usha exports its products to various countries across the globe and also has overseas offices.

For more information please visit www.usha.com





3D APPLIQUE 6 & 7



5D APPLIQUE 15



ACUSETTER 40



BUILT-IN EMBROIDERY 10



COUCHING 35



CROSS STITCH 11



CUTWORK 19



DECORATIVE BUTTONHOLE EMBROIDERY 38



DECORATIVE STITCHES 18



FLORAL VEIN 41



LACE WORK 5



FOIL WORK 42



MONOGRAMMING 23



MULTI-HOOPING EMBROIDERY 14



PAINT STITCH 32



PATCHWORK 27



PATTERN QUILTING 30



PHOTOSTITCH 31



QUILTING WITH 3D EMBROIDERY 28



REDWORK 39



REVERSE LETTERS 20



SPLIT LETTERS 24



STIPPLING 29



STITCHES 18



USHER JANOME
Memory Craft
Skyline S9
can create freestanding
lace or lace inserts
entirely with thread
within its 6.7" x 7.9"
embroidery field.



Lace WORK

*Perfect for trims,
collars, cuffs and
heirloom-style
couture details.*



3D Applique



USHA JANOME
Memory Craft
Skyline S9
can create raised, dimensional appliqué using precision embroidery placement, automatic thread tension control and on-screen design editing.

Perfect for sculptural florals, layered couture surfaces and statement garment detailing.



Applique

USHA JANOME
Memory Craft
Skyline S9

can position embroidery designs with exact on-screen alignment.



Perfect for flawless logo placement, pocket detailing and continuous border execution.



Where
embroidery & sewing
exist as one seamless expression.



USHR JANOME
Memory Craft





USHA JANOME
Memory Craft Skyline S9

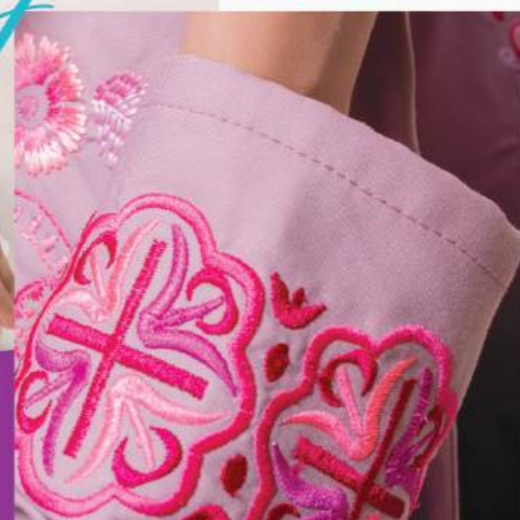
includes 250 built-in embroidery designs, including exclusive designer motifs, along with multiple fonts and on-screen editing tools.



Perfect for instant customisation, personalised gifting and ready-to-stitch projects.

250
Built-In

Embroidery



Cross *Stitch*



USHA JANOME
Memory Craft Skyline S9

can replicate classic cross-stitch patterns with digital precision and consistent stitch control at speeds up to 800 stitches per minute.

Perfect for heritage-inspired motifs and contemporary pixel designs.



One Machine.
Multiple Disciplines.



USHA JANOME
Memory Craft



Multi *hooping*



U.S.H.R. JANOME
**Memory Craft
Skyline S9**

can stitch large-scale designs across multiple hoop placements with precise alignment tools and flexible stitch travelling.

Perfect for oversized motifs, jacket backs and expansive panels.



5D *Embroidery*



U.S.H.R. JANOME
**Memory Craft
Skyline S9**

can create multi-layered, high-density embroidery with advanced editing, shading control and precision placement across it's full embroidery field.

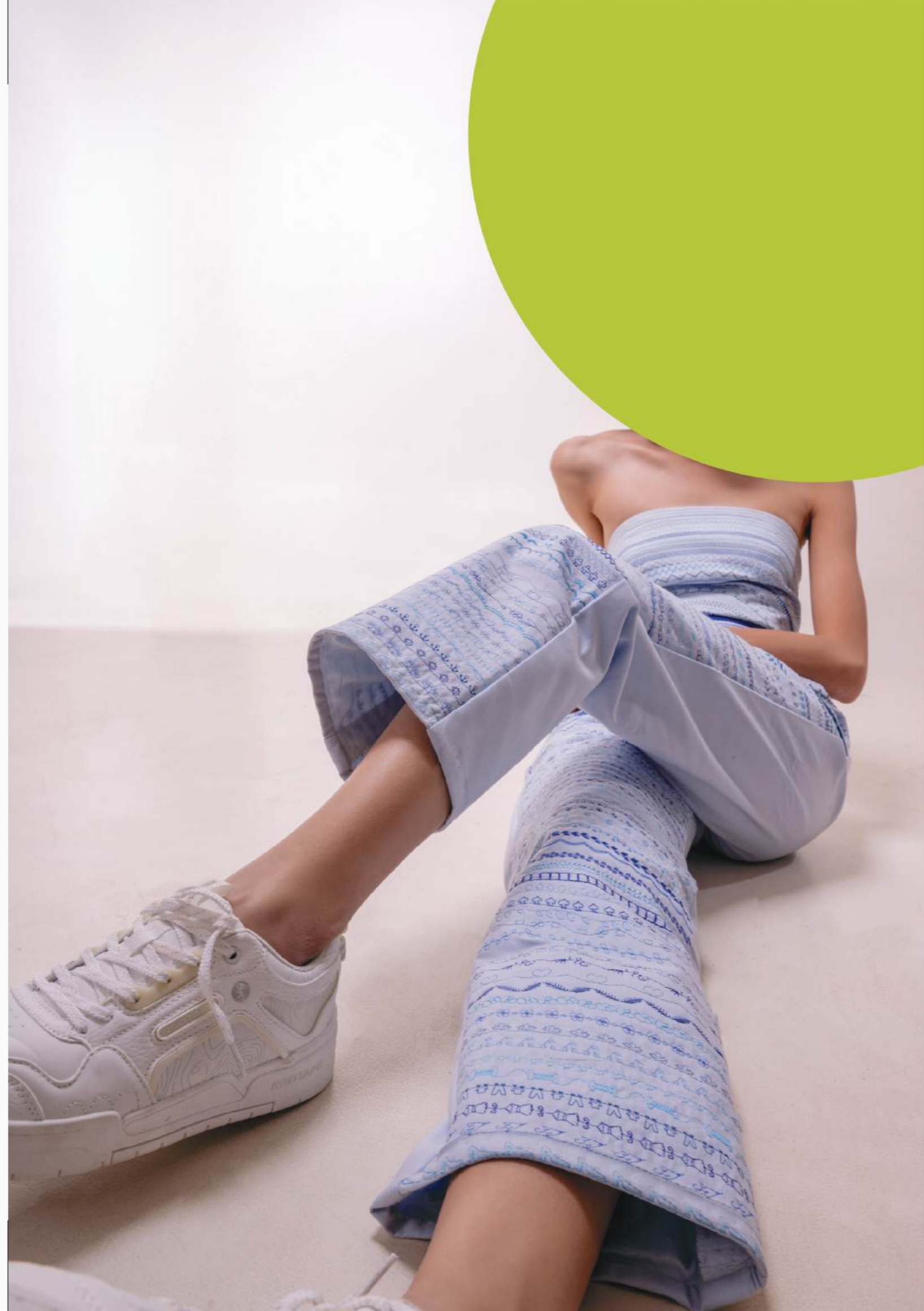
Perfect for couture surfaces, dramatic dimensional artwork and statement textile design that commands attention.



Performance at **1000**
stitches per minute.
Grace at every turn.



U S H A JANOME
Memory Craft

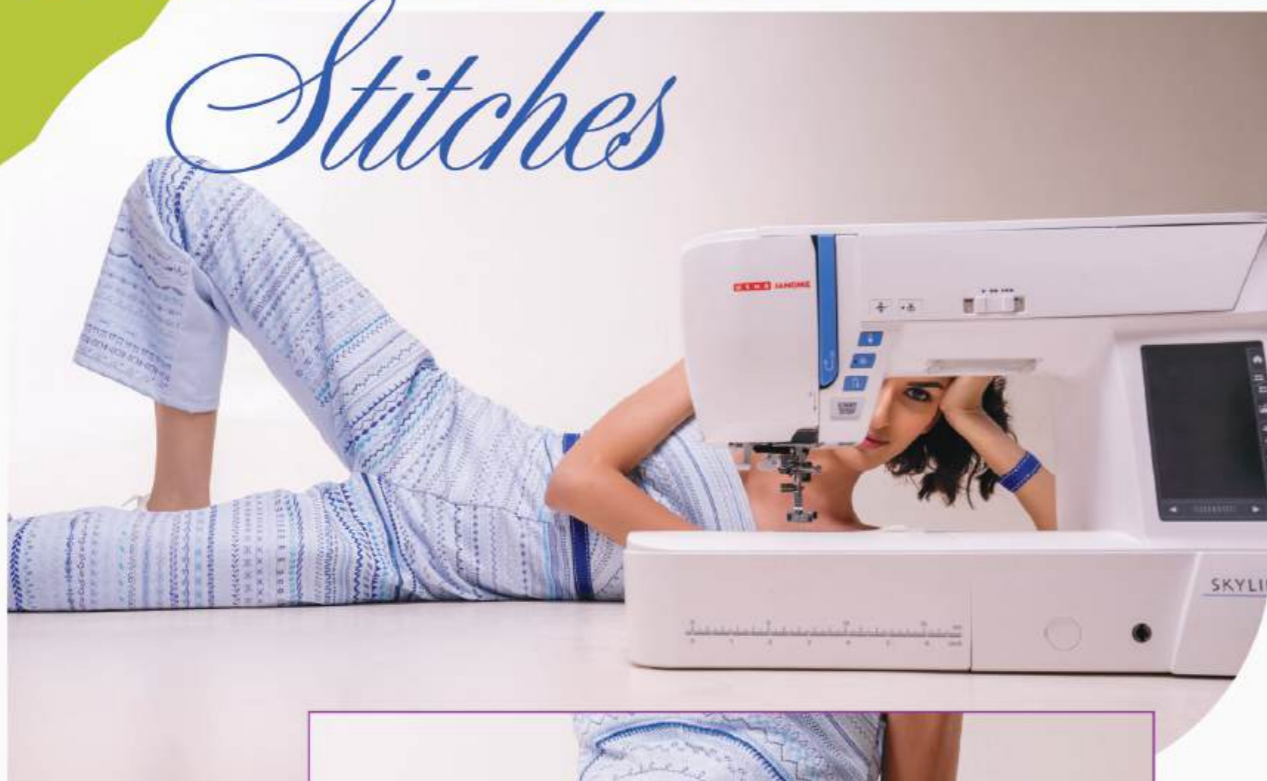


Decorative

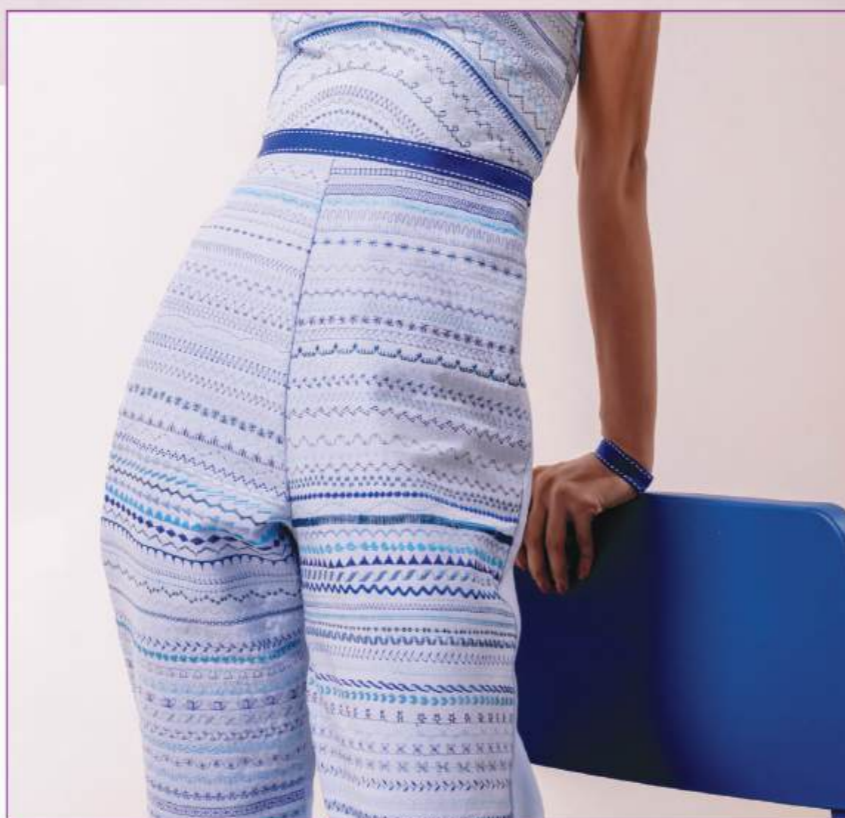
Stitches

USHA JANOME Memory Craft Skyline S9

offers 300 built-in stitches with a maximum width of 9 mm and stitch tapering capability at Speeds up to 1000 Stitches per minute.



Perfect for statement borders, seam artistry and elevated everyday sewing.



Cutwork



USHA JANOME Memory Craft Skyline S9

offers cutwork capability that combines embroidery stitching with precise fabric cut-outs.

Perfect for lace-style panels, dramatic sleeves and intricate home décor accents.



Reverse Letters



U S H A J A N O M E
**Memory Craft
Skyline S9**
defines layered fabrics
with controlled stitching
and precision reveal.

*Perfect for bold contrast
panels and contemporary
statements.*

Intuitive control.
Advanced capability.



U S H A J A N O M E
Memory Craft



USHA JANOME
Memory Craft
Skyline S9
offers 20 built-in
monogramming
fonts with on-screen
resizing, rotating and
arc functions.



Monogramming



Perfect for
personalised
linens, uniforms,
gifting and brand
signatures.

Split Letters



USHR JANOME
Memory Craft
Skyline S9

can divide large embroidery designs into precisely aligned stitchable sections with memory recall and positioning control.

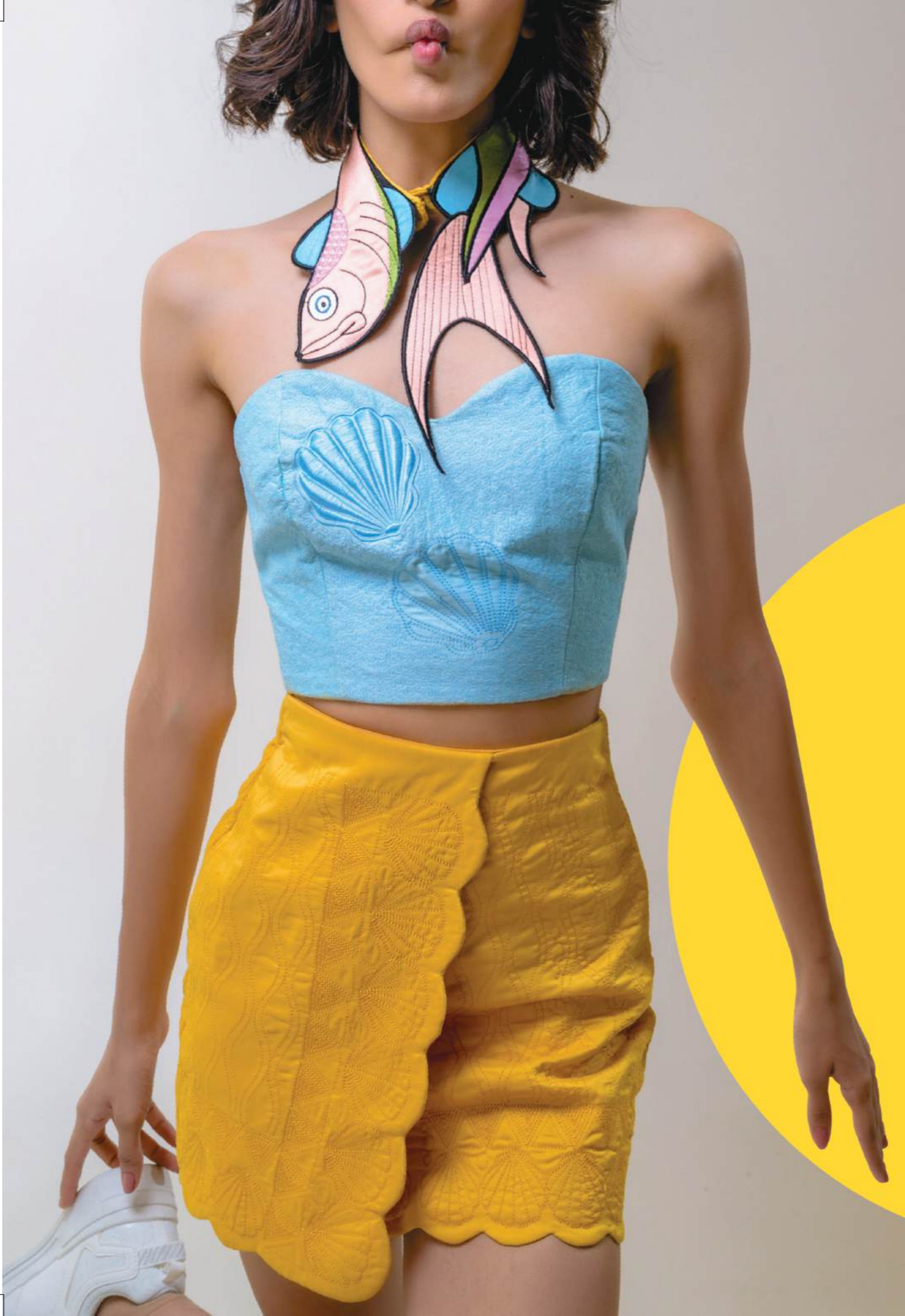
Perfect for wide borders, continuous panels and large-format compositions.



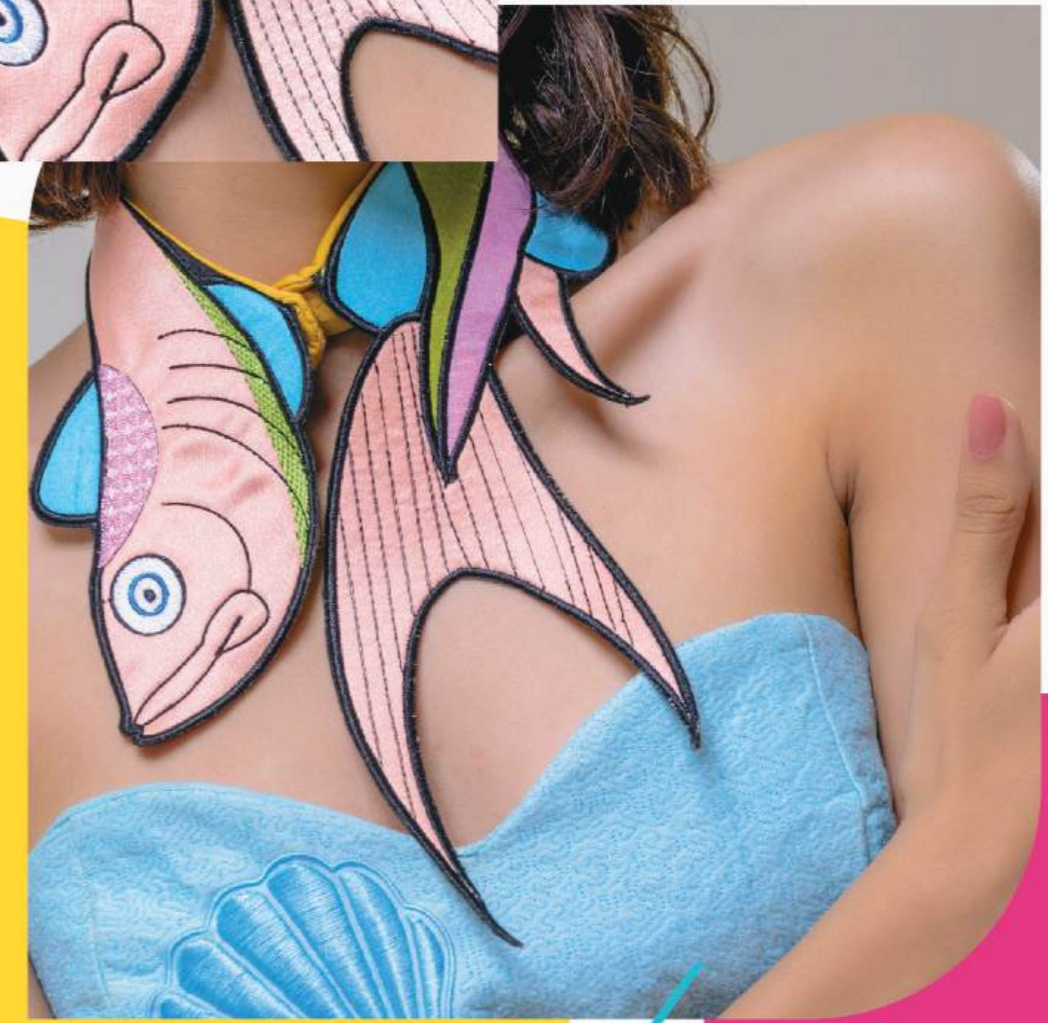
Technology that honours
craftsmanship.



USHR JANOME
Memory Craft



USHA JANOME
Memory Craft
Skyline S9
supports precise
patchwork piecing.



Patch *work*

Perfect for structured
quilt blocks and
accurate fabric
construction.

Quilting with 3D *Embroidery*



USHR JANOME
Memory Craft
Skyline S9
can integrate raised embroidery elements into quilted surfaces using controlled stitch depth and feed precision.



Perfect for textured quilts, art textiles and dimensional storytelling.

Stippling Quilting

USHR JANOME
Memory Craft
Skyline S9
can create smooth, continuous stippling patterns with consistent stitch regulation and automatic tension control.



Perfect for background quilting, adding subtle texture and giving quilts a soft, professional finish with fluid movement.



Pattern Quilting



USHR JANOME
Memory Craft Skyline S9
can stitch programmed quilting motifs with consistent tension and automatic feed control across its spacious 6.7" x 7.9" work area.

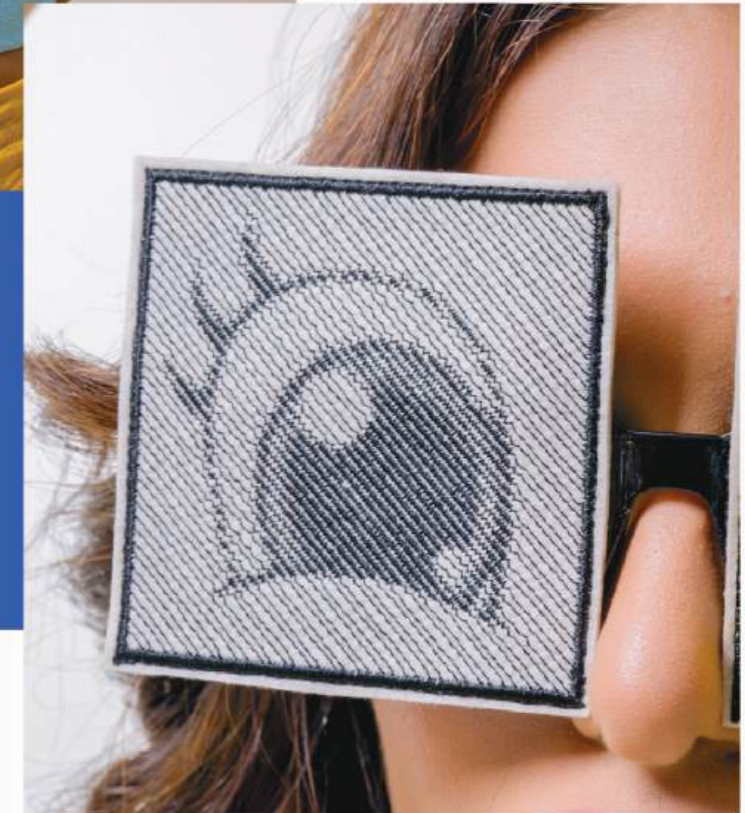
Perfect for professional quilt finishes and decorative surface quilting.

Photo Stitch



USHR JANOME
Memory Craft Skyline S9
can convert photographs into detailed embroidery with Artistic Digitiser Full Version Software.

Perfect for portraits, memory keepsakes and bespoke artwork.



Paint *Stitch*

USHR JANOME

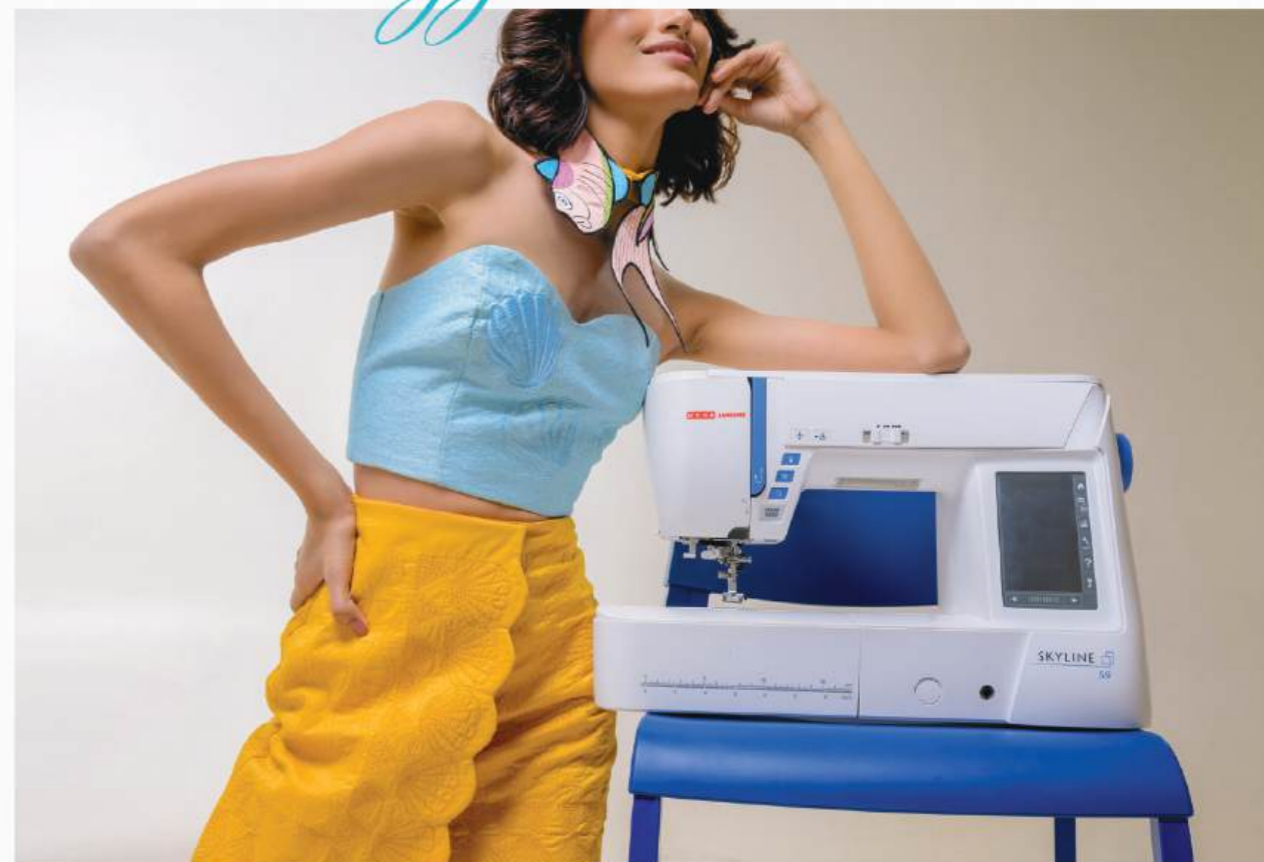
**Memory Craft
Skyline S9**

layers thread with
tonal control and
nuanced stitch density.



*Perfect for
painterly florals,
portraits and
expressive textile
compositions.*

Japanese
Technology that honours craftsmanship.



USHR JANOME
Memory Craft



USHA JANOME
Memory Craft
Skyline S9

delivers refined couching with controlled thread guidance and programmable trimming.

Couching



Perfect for rich texture, elevated typography and dimensional surface artistry.



Structured precision.
Fluid creativity.



U.S.H.A. JANOME
Memory Craft





USHA JANOME
Memory Craft
Skyline S9

transforms functional
buttonholes into ornamental
design features with structured
stitch consistency.

Decorative Buttonhole *Embroidery*

*Perfect for tailored
garments and
elevated couture
finishes.*



USHA JANOME
Memory Craft
Skyline S9

produces single-colour line
embroidery with exceptional
clarity and stitch purity.

Redwork



*Perfect for timeless
motifs rendered
with understated
elegance.*



AcuSetter

U S H R JANOME
Memory Craft
Skyline S9
can position
embroidery designs
accurately on printed
fabric with the help
of the AcuSetter App.



*Perfect for
bold contrast
panels and
contemporary
appliqué
statements.*



U S H R JANOME
Memory Craft
Skyline S9
renders delicate vein
structures with subtle
stitch modulation and
natural flow.



Floral Vein

*Perfect for botanical
embroidery that feels
lifelike and intricately
composed.*

Foil Work



USHA JANOME
Memory Craft
Skyline S9
secures mirror
embellishments with
balanced stitch framing
and controlled density.

*Perfect for
heritage
craftsmanship
elevated with
modern
precision.*

Layered texture.
Clean execution.



USHA JANOME
Memory Craft

Memory Craft Sewing Machines



MC 15000 Sewing, Embroidery and Quilting Machine



- Wifi enabled machine.
- Connects wirelessly to iPad.
- iPad apps like AcuEdit, AcuMonitor, AcuSetter, AcuSketch aid in remotely accessing and working on the machine.
- Real time FC connection with Horizon PC, Suite Provided with the machine.
- Machine comes with a premium accessory carrying case.
- New easy needle threader makes it truly hands-free.
- Large embroidery area of 230 mm x 300 mm
- Advanced editing facility available on the machine.
- Digitizer MBX a powerful digitizing software provided free with the machine.

500
STITCHES

11
BUILT IN
MONOGRAMMING
FONTS

480
EMBROIDERY
DESIGNS



MC MB7E Single Head 7 - Needle Embroidery Machine



- Artistic Digitizer provided free with the machine.
- Independent bobbin winding.
- USB compatible.
- Direct PC Link.
- Compatible with Tajima hoops.
- 4 White LED lights over needle area for easy viewing.
- 3 Hoops: M1 (240 mm x 200 mm), M2 (126 mm x 110 mm), M3 (50 mm x 50 mm).
- RCS (Remote Computer Screen) control panel included.
- Total weight of the machine is 23 kg

Memory Craft Sewing Machines



MC 550E Embroidery Machine



- Embroidery machine with a large embroidery area, 200 mm X 360 mm
- Artistic Digitizer Jr., an editing software provided free with the machine.
- Touch screen for design selection.
- Fine position / angle adjustment key for perfectly joining two designs.
- Embroidery speed of 860 SPM (Stitches per Minute).
- USB Port (A&B) for interesting customised designs / direct connection with PC.

180
BUILT IN
EMBROIDERY
DESIGNS

6
BUILT IN
MONOGRAMMING
FONTS



MC 450E Embroidery Machine



- It is enabled to embroider designs of up to 200 mm X 280 mm & 200 mm X 200 mm
- It comes with two hoops - RE 28b: 200 mm X 280 mm and SQ 20b: 200 mm X 200 mm
- 13 cm Full color LCD touchscreen.
- On-screen editing functions including enlarge / reduce, rotate, flip, drag and drop, arc, combine, copy and paste, grouping, corner layout, single color sewing, zoom.
- Speed: 860 Stitches per minute.
- Comes with Artistic Digitizer Jr. software, which allows one to edit existing designs and making select custom designs.

160
BUILT IN
EMBROIDERY
DESIGNS

6
BUILT IN
MONOGRAMMING
FONTS



SKYLINE S9 Embroidery Machine



- Wifi enabled machine.
- Available iPad apps including AcuEdit, AcuMonitor and AcuSetter.
- Artistic Digitizer, a designing software, provided free with the machine.
- LCD full colour touch screen.
- Real time PC connection with Acutools 5 for combining and editing embroidery designs.
- 2 & 3 Letter monogramming functions with 9 mm stitch width.
- Couching kit provided with the machine.

300
STITCHES

250
BUILT IN
EMBROIDERY
DESIGNS

20
BUILT IN
MONOGRAMMING
FONTS



9850 E Embroidery Machine



- Sewing and embroidery machine with an embroidery area of 200 mm X 170 mm
- Artistic Digitizer, a designing software, provided free with the machine.
- Touch screen for design selection.
- USB Port (A&B) for more interesting customised designs.
- Embroidery speed of 800 SPM (Stitches per Minute) and stitch speed of 1000 SPM.
- Comes with detachable embroidery unit.

200
STITCHES

175
BUILT IN
EMBROIDERY
DESIGNS

6
BUILT IN
MONOGRAMMING
FONTS



6700 P Quilting Machine

- Dials for stitch length and stitch width control.
- 9 One-step buttonholes.
- Accufeed Flex: Layered fabric feeding system.
- 91 Needle positions.
- Speed: 1200 SPM (Stitches per Minute).
- Designed specifically for quilters with 28 cm space to the right of the needle to make stitching experience smoother.

200
BUILT IN
STITCHES UPTO
9MM WIDE

5
BUILT IN
MONOGRAMMING
FONTS



8200 QCP Quilting Machine

- 10 One-step buttonholes.
- Detachable Accufeed Flex system.
- Super fine needle position adjustment.
- Start/ Stop button plus speed control slider for ease of use.
- Stitching speed of 1000 SPM (Stitches per minute)
- 28 cm Space to the right of the needle.

170
BUILT IN
STITCHES UPTO
9mm WIDE

3
BUILT IN
MONOGRAMMING
FONTS